

Temo inc.

Handwritten signature

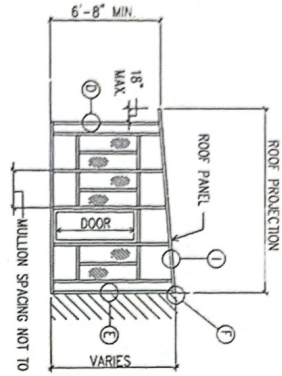
6/1/22

SPECIFICATIONS FOR
 SUNROOMS AND PATIO COVERS WITH
 3.625 INCH WALL MULLIONS

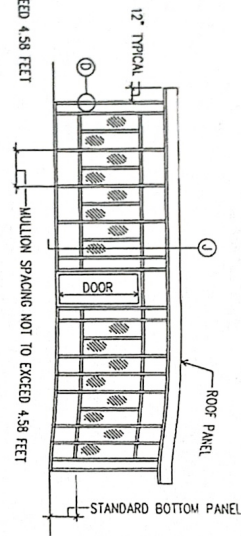
PAGE NUMBER	INDEX OF SHEETS
1	FLOOR PLANS, ELEVATIONS and ROOF PLANS
2	3.625" SUNROOM SYSTEM ROOF DETAILS and NOTES
3	3.625" SUNROOM SYSTEM WALL DETAILS
4	3.625" SUNROOM SYSTEM CROSS SECTION and ATTACHMENT DETAILS
5	3.625" SUNROOM SYSTEM WIND LOAD CALCULATIONS

DATE: JUN 06, 2022
 TIME: 10:00 AM
 DRAWN BY: [Name]
 CHECKED BY: [Name]
 PROFESSIONAL ENGINEER
 MICHIGAN REG. NO. [Number]
 EXPIRES: [Date]

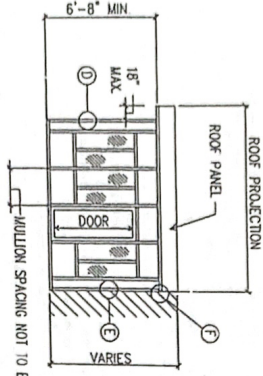
OWNER: [Name]
 PROJECT: [Name]
 FILE NAME: 4TEM01COVER
 SHT. NO. 4TEM01COVER COVER SHEET



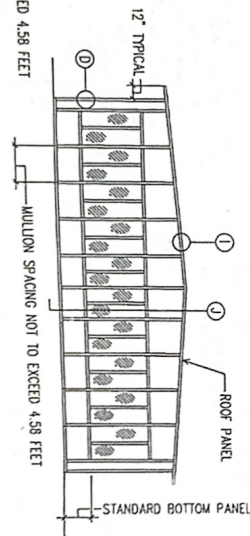
PATIO COVER END WALL ELEVATION



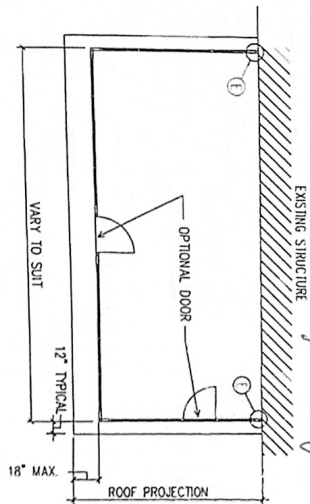
PATIO COVER FRONT WALL ELEVATION



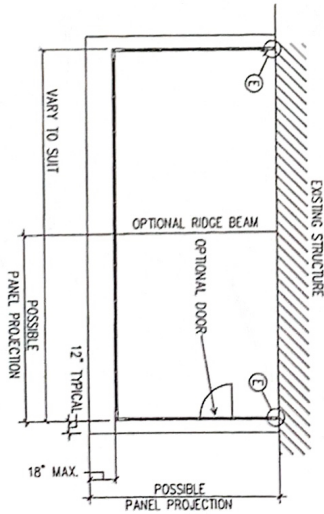
PATIO COVER END WALL ELEVATION



PATIO COVER FRONT WALL ELEVATION



TYPICAL STUDIO ROOF PATIO COVER PLAN



TYPICAL CABLE ROOF PATIO COVER PLAN

NOTE:
ALL SECTIONS & DETAILS REFERENCED HERE ARE SHOWN ON SHEETS 41EM02, 41EM03 AND 41EM04.

Handwritten signature: Andy Fisher
4/10/22

DATE	08/08/2022
DESIGNED BY	ANDY FISHER
CHECKED BY	ANDY FISHER
SCALE	AS SHOWN
PROJECT NO.	20400 HALL ROAD
SHEET NO.	1 OF 5

FLOOR PLAN
ELEVATIONS &
ROOF PLAN

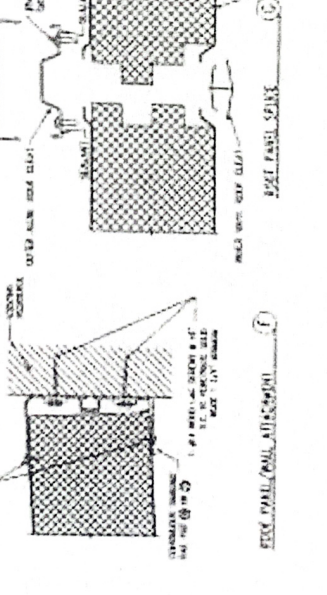
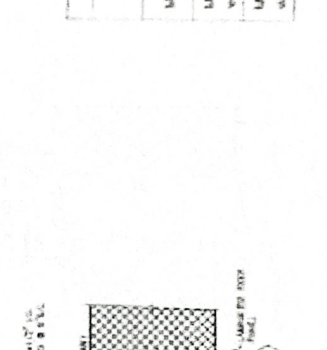
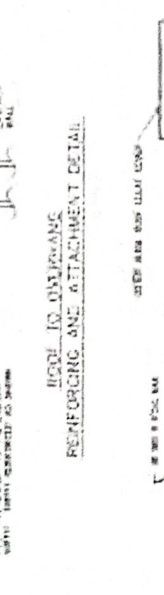
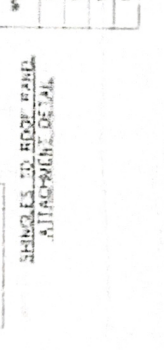
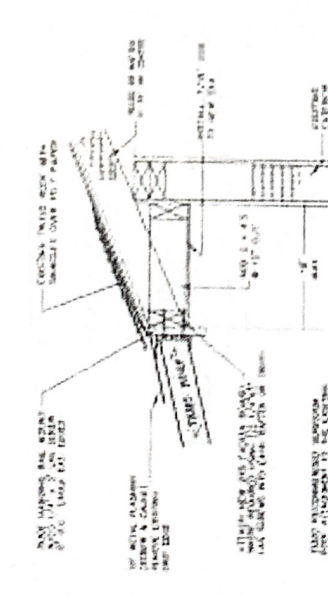
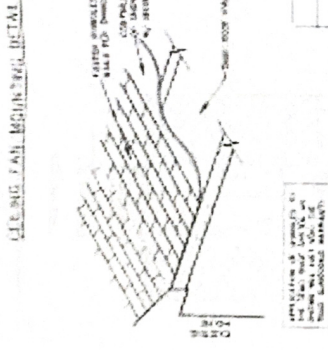
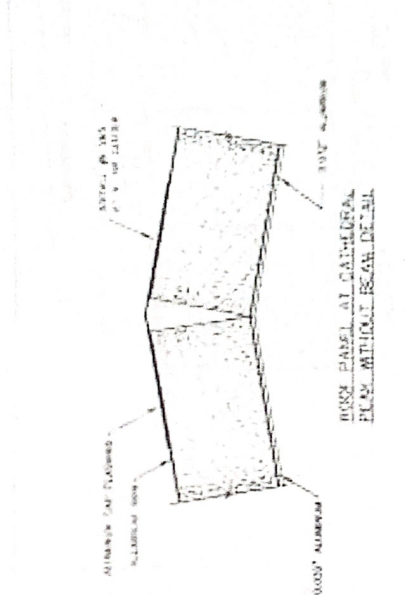
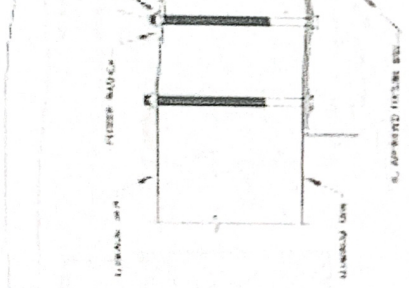
Temo Inc.
20400 HALL ROAD - CLINTON TOWNSHIP - MICHIGAN 48038
586-286-0410 800-344-8366

WHERE REQUIRED THESE PLANS HAVE BEEN SIGNED AND SEALED BY A PROFESSIONAL ENGINEER. ONLY AN ORIGINAL SIGNATURE WITH A RED INK STAMP OR AN EMBOSSED SEAL INDICATE THE VALIDITY OF THAT SIGNATURE.

TMO, INC. MAINTAINS THE REPORTS LISTED ACROSS THE TOP OF THESE PAGES. PLEASE REFER TO THE NOTES ON PAGE 41EM02 FOR ANY ADDITIONAL INFORMATION CONCERNING THESE REPORTS.

VOID IF SUBMITTED AFTER
DECEMBER 6, 2022

Handwritten signature



GENERAL NOTES & SPECIFICATIONS

1. ALL DIMENSIONS UNLESS OTHERWISE NOTED ARE IN FEET AND INCHES.
2. ALL DIMENSIONS UNLESS OTHERWISE NOTED ARE IN FEET AND INCHES.
3. ALL DIMENSIONS UNLESS OTHERWISE NOTED ARE IN FEET AND INCHES.
4. ALL DIMENSIONS UNLESS OTHERWISE NOTED ARE IN FEET AND INCHES.
5. ALL DIMENSIONS UNLESS OTHERWISE NOTED ARE IN FEET AND INCHES.
6. ALL DIMENSIONS UNLESS OTHERWISE NOTED ARE IN FEET AND INCHES.
7. ALL DIMENSIONS UNLESS OTHERWISE NOTED ARE IN FEET AND INCHES.
8. ALL DIMENSIONS UNLESS OTHERWISE NOTED ARE IN FEET AND INCHES.
9. ALL DIMENSIONS UNLESS OTHERWISE NOTED ARE IN FEET AND INCHES.
10. ALL DIMENSIONS UNLESS OTHERWISE NOTED ARE IN FEET AND INCHES.
11. ALL DIMENSIONS UNLESS OTHERWISE NOTED ARE IN FEET AND INCHES.
12. ALL DIMENSIONS UNLESS OTHERWISE NOTED ARE IN FEET AND INCHES.
13. ALL DIMENSIONS UNLESS OTHERWISE NOTED ARE IN FEET AND INCHES.
14. ALL DIMENSIONS UNLESS OTHERWISE NOTED ARE IN FEET AND INCHES.
15. ALL DIMENSIONS UNLESS OTHERWISE NOTED ARE IN FEET AND INCHES.
16. ALL DIMENSIONS UNLESS OTHERWISE NOTED ARE IN FEET AND INCHES.
17. ALL DIMENSIONS UNLESS OTHERWISE NOTED ARE IN FEET AND INCHES.
18. ALL DIMENSIONS UNLESS OTHERWISE NOTED ARE IN FEET AND INCHES.
19. ALL DIMENSIONS UNLESS OTHERWISE NOTED ARE IN FEET AND INCHES.
20. ALL DIMENSIONS UNLESS OTHERWISE NOTED ARE IN FEET AND INCHES.
21. ALL DIMENSIONS UNLESS OTHERWISE NOTED ARE IN FEET AND INCHES.
22. ALL DIMENSIONS UNLESS OTHERWISE NOTED ARE IN FEET AND INCHES.
23. ALL DIMENSIONS UNLESS OTHERWISE NOTED ARE IN FEET AND INCHES.
24. ALL DIMENSIONS UNLESS OTHERWISE NOTED ARE IN FEET AND INCHES.
25. ALL DIMENSIONS UNLESS OTHERWISE NOTED ARE IN FEET AND INCHES.
26. ALL DIMENSIONS UNLESS OTHERWISE NOTED ARE IN FEET AND INCHES.
27. ALL DIMENSIONS UNLESS OTHERWISE NOTED ARE IN FEET AND INCHES.
28. ALL DIMENSIONS UNLESS OTHERWISE NOTED ARE IN FEET AND INCHES.
29. ALL DIMENSIONS UNLESS OTHERWISE NOTED ARE IN FEET AND INCHES.
30. ALL DIMENSIONS UNLESS OTHERWISE NOTED ARE IN FEET AND INCHES.
31. ALL DIMENSIONS UNLESS OTHERWISE NOTED ARE IN FEET AND INCHES.
32. ALL DIMENSIONS UNLESS OTHERWISE NOTED ARE IN FEET AND INCHES.
33. ALL DIMENSIONS UNLESS OTHERWISE NOTED ARE IN FEET AND INCHES.
34. ALL DIMENSIONS UNLESS OTHERWISE NOTED ARE IN FEET AND INCHES.
35. ALL DIMENSIONS UNLESS OTHERWISE NOTED ARE IN FEET AND INCHES.
36. ALL DIMENSIONS UNLESS OTHERWISE NOTED ARE IN FEET AND INCHES.
37. ALL DIMENSIONS UNLESS OTHERWISE NOTED ARE IN FEET AND INCHES.
38. ALL DIMENSIONS UNLESS OTHERWISE NOTED ARE IN FEET AND INCHES.
39. ALL DIMENSIONS UNLESS OTHERWISE NOTED ARE IN FEET AND INCHES.
40. ALL DIMENSIONS UNLESS OTHERWISE NOTED ARE IN FEET AND INCHES.
41. ALL DIMENSIONS UNLESS OTHERWISE NOTED ARE IN FEET AND INCHES.
42. ALL DIMENSIONS UNLESS OTHERWISE NOTED ARE IN FEET AND INCHES.
43. ALL DIMENSIONS UNLESS OTHERWISE NOTED ARE IN FEET AND INCHES.
44. ALL DIMENSIONS UNLESS OTHERWISE NOTED ARE IN FEET AND INCHES.
45. ALL DIMENSIONS UNLESS OTHERWISE NOTED ARE IN FEET AND INCHES.
46. ALL DIMENSIONS UNLESS OTHERWISE NOTED ARE IN FEET AND INCHES.
47. ALL DIMENSIONS UNLESS OTHERWISE NOTED ARE IN FEET AND INCHES.
48. ALL DIMENSIONS UNLESS OTHERWISE NOTED ARE IN FEET AND INCHES.
49. ALL DIMENSIONS UNLESS OTHERWISE NOTED ARE IN FEET AND INCHES.
50. ALL DIMENSIONS UNLESS OTHERWISE NOTED ARE IN FEET AND INCHES.

TABLE C. MAXIMUM ROOF PANEL SPANS

WIND SPEED	PANEL DESIGNATION		
	1-3-2-11	1-4-2-11-2-12	1-5-6*
110 MPH	13'-0"	15'-0"	18'-0"
115 MPH	12'-2"	14'-0"	17'-0"
120 MPH	11'-0"	13'-0"	16'-0"
140 MPH	10'-1"	12'-0"	15'-0"

* MAXIMUM PANEL OVERHANG IS 1'-6" MAXIMUM ROOF PANEL SLOPE IS 2%

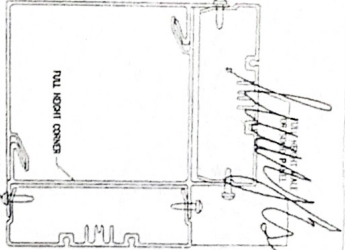
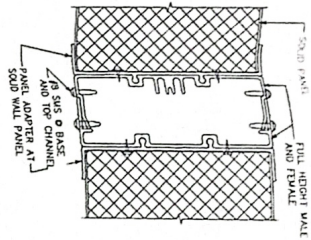
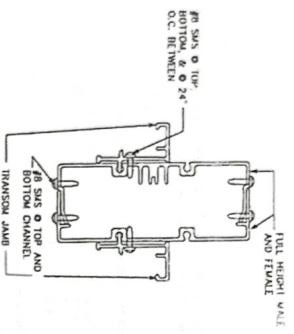
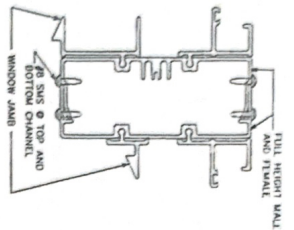
ALLOWABLE MULLION HEIGHTS AT MAXIMUM SPACING

MULLION	WIND SPEED			
	110 MPH	115 MPH	120 MPH	140 MPH
MALE-FEMALE	9'-0"	7'-6"	7'-0"	6'-0"
MALE-FEMALE w/ WALL STUO	1'-4"	1'-4"	1'-4"	1'-4"
MALE-FEMALE w/ RACEWAY	1'-0"	1'-0"	1'-0"	1'-0"

Tempo Inc

12345 6789 1011 1213 1415 1617 1819 2021 2223 2425 2627 2829 3031 3233 3435 3637 3839 4041 4243 4445 4647 4849 5051 5253 5455 5657 5859 6061 6263 6465 6667 6869 7071 7273 7475 7677 7879 8081 8283 8485 8687 8889 9091 9293 9495 9697 9899 10000

1 2 3 4 5 6 7 8 9 10 11 12 13 14 15 16 17 18 19 20 21 22 23 24 25 26 27 28 29 30 31 32 33 34 35 36 37 38 39 40 41 42 43 44 45 46 47 48 49 50 51 52 53 54 55 56 57 58 59 60 61 62 63 64 65 66 67 68 69 70 71 72 73 74 75 76 77 78 79 80 81 82 83 84 85 86 87 88 89 90 91 92 93 94 95 96 97 98 99 100

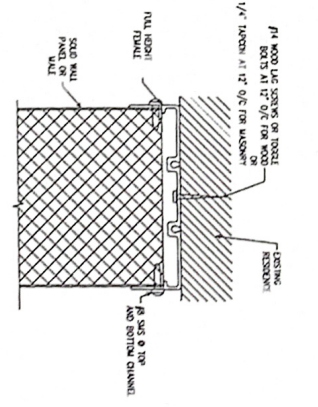
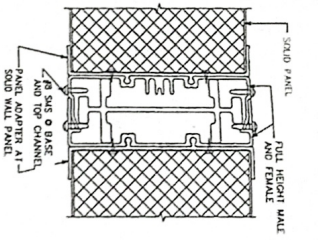
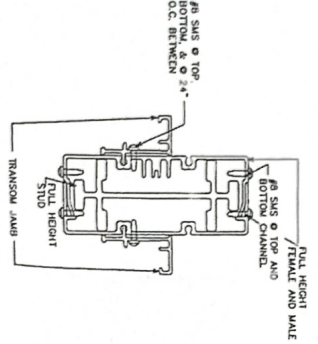
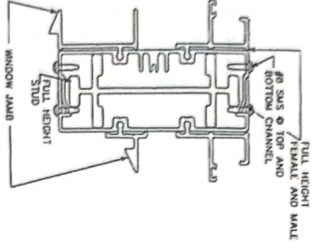


Handwritten signature and date: 12/6/22

MALE / FEMALE MILLIONS

(A)

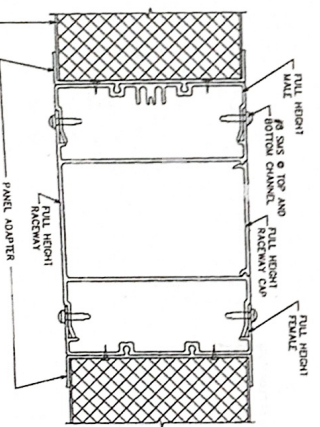
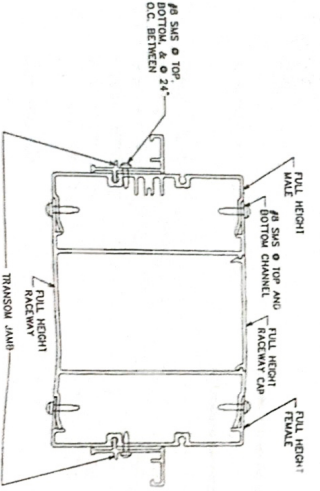
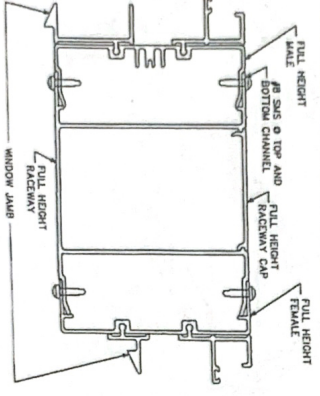
(D) CORNER



FEMALE / MALE STUD/MALE

(B)

(E) CONNECTION @ HOUSE



MALE / RACEWAY / FEMALE MILLIONS

(C)

DATE: JUN 08 2022
 DRAWN BY: J. J. J. J.
 CHECKED BY: J. J. J. J.
 PROJECT: 3.625" SUNROOM SYSTEM WALL DETAILS
 SHEET NO. 3 OF 3

3.625" SUNROOM SYSTEM WALL DETAILS

Temo Inc.
 20400 HALL ROAD - CLINTON TOWNSHIP - MICHIGAN 48038
 586-286-0410 800-344-8366

WHERE REQUIRED THESE PLANS HAVE BEEN SIGNED AND SEALED BY A PROFESSIONAL ENGINEER. ONLY AN ORIGINAL SIGNATURE WITH A RED INK STAMP OR AN EMBOSSED SEAL INDICATE THE VALIDITY OF THAT SIGNATURE.

TMO, INC. MAINTAINS THE REPORTS LISTED ACROSS THE TOP OF THESE PAGES. PLEASE REFER TO THE NOTIS ON PAGE 4TMO? FOR ANY ADDITIONAL INFORMATION CONCERNING THESE REPORTS.

VOID IF SUBMITTED AFTER DECEMBER 6, 2022

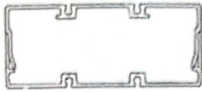
Wind Calculations for Standard Mullions for Max. Spacing (206 & 306)

Handwritten signature

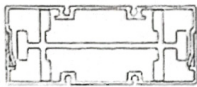
Wind Speed (80, 90, 100, 110, 120, 130, 140, 150)
 Exposure (B, C, D)
 Calculated Wind Pressure

120
 B
 24

Male-Female Mullion



Male-Stud-Female Mullion



Male-Raceway-Female Mullion



Maximum Mullion Height(ft)

7

Centroid (in)
 Moment of Inertia (in⁴)
 Section Modulus (in³)
 Calculated Moment (lb*in)
 Allowable Fb (psi)
 Calculated fb

1 8282
 1 3283
 0 7266
 8820
 15000
 12138 73

Section OK

Maximum Mullion Height(ft)

10

Centroid (in)
 Moment of Inertia (in⁴)
 Section Modulus (in³)
 Calculated Moment (lb*in)
 Allowable Fb (psi)
 Calculated fb

1 8264
 2 4763
 1 3558
 18000
 15000
 13276 29

Section OK

Maximum Mullion Height(ft)

12

Centroid (in)
 Moment of Inertia (in⁴)
 Section Modulus (in³)
 Calculated Moment (lb*in)
 Allowable Fb (psi)
 Calculated fb

1 8502
 3 7152
 2 0080
 25920
 13500
 12908 37

Section OK



102 S. Plymouth Court, Southampton, NJ 08088
(609) 859-8001 caa@leisuretowne.org

PERMIT # 16017

June 20, 2022

Thomas & Patricia Webb
6 Sheffield Place
Southampton, NJ 08088

Block #21 Lot #22

Dear Thomas & Patricia Webb:

Please be advised that the Architectural Control Committee (ACC) has approved your request to remove existing porch and build a 14' x 17' Sunroom on rear of home. Official permits must be obtained before any work is started. Please contact the office when work has been completed for a final inspection.

Representatives of the Architectural Control Committee will inspect the completed work and require any change be made, at the homeowner's expense. Additional changes to your property would require separate approval.

Please remember, Contractor's signs are not to be displayed on the property.

Sincerely,

Architectural Control Committee

cc. Homeowner File

LeisureTowne Association
Architectural Committee

APPROVED

Permit Number 16017 Date 6/20/22
Address 6 Sheffield Place

Permit MUST BE placed in a front window visible from the street when the work starts.

Permit Expires in 90 days

Webb

SRA Home Products

